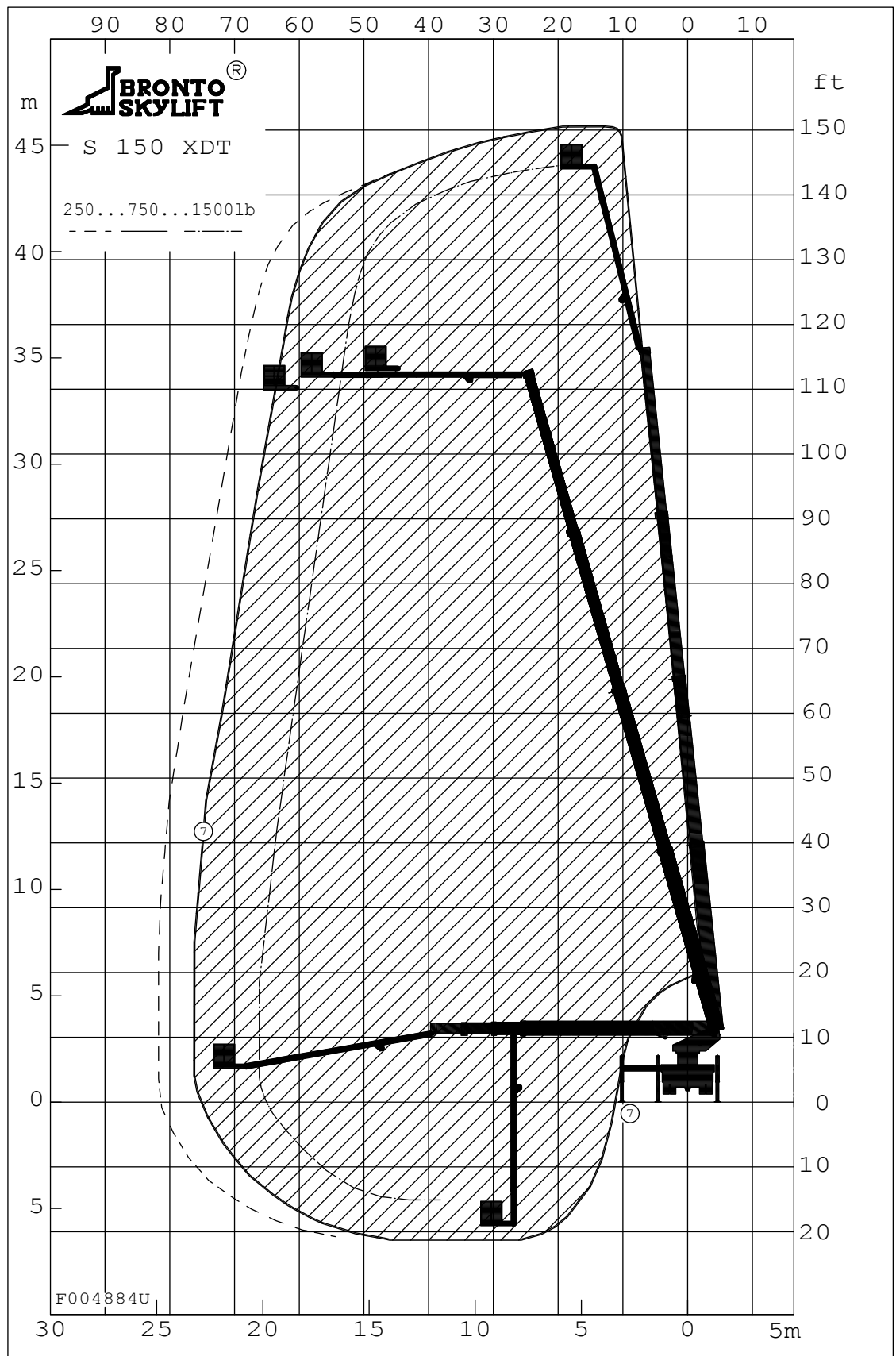


NOTE1: PRELIMINARY  
 NOTE2:  
 REMARKS: GVW 18 ton



TECHNICAL DATA

Safe working load max.	: 700 kg	1500 lb
Max. permitted wind speed	: 12.5 m/s	27 mph
Typical GVW	: 18 ton	40,000 lb
operating weight min.	: 17 ton	38,000 lb
Outrigger width and length c/c		
- normal jacking	: 6.2/5.85 m	20'-4"/19'-2"
- narrow jacking	: 2.8/5.85 m	9'-2"/19'-2"
- one side jacking	: 4.5/5.85 m	14'-9"/19'-2"
Calculation code	:	

GVW 18 ton

<small>All rights reserved          This specification may be revised without notice.          This document, which is our exclusive intellectual property, shall be treated as strictly private and confidential and shall neither be copied nor communicated to any third person without our written consent.          BRONTO SKYLIFT OY AB          Tampere Finland</small>		ULOTTUVUUSKAAVIO RÄCKVIDSDIAGRAM OUTREACH DIAGRAM ARBEITSDIAGRAM DIAGRAMA DE TRABAJO РАБОЧАЯ СХЕМА	
<small>All rights reserved          Änderungen vorbehalten          Sous réserve de modification</small>		<small>Valmistaja pidättää oikeuden muutoksiin          Reservation för ändringar</small>	
1 : 200	<b>BRONTO SKYLIFT</b>	<b>S 46 XDT</b>	
(A3)	<b>OUTREACH DIAGRAM</b>	DRAWN	KKe 2007-04-16
CODE:	O	SAFE WORKING LOAD 700 KG	APPVD
		LAYER	REV
		DWG NUMBER	<b>F0048840</b>
<small>BRONTO SKYLIFT OY AB FINLAND</small>		BRONTOCAD	

HANDLING ON CAD SYSTEM ONLY