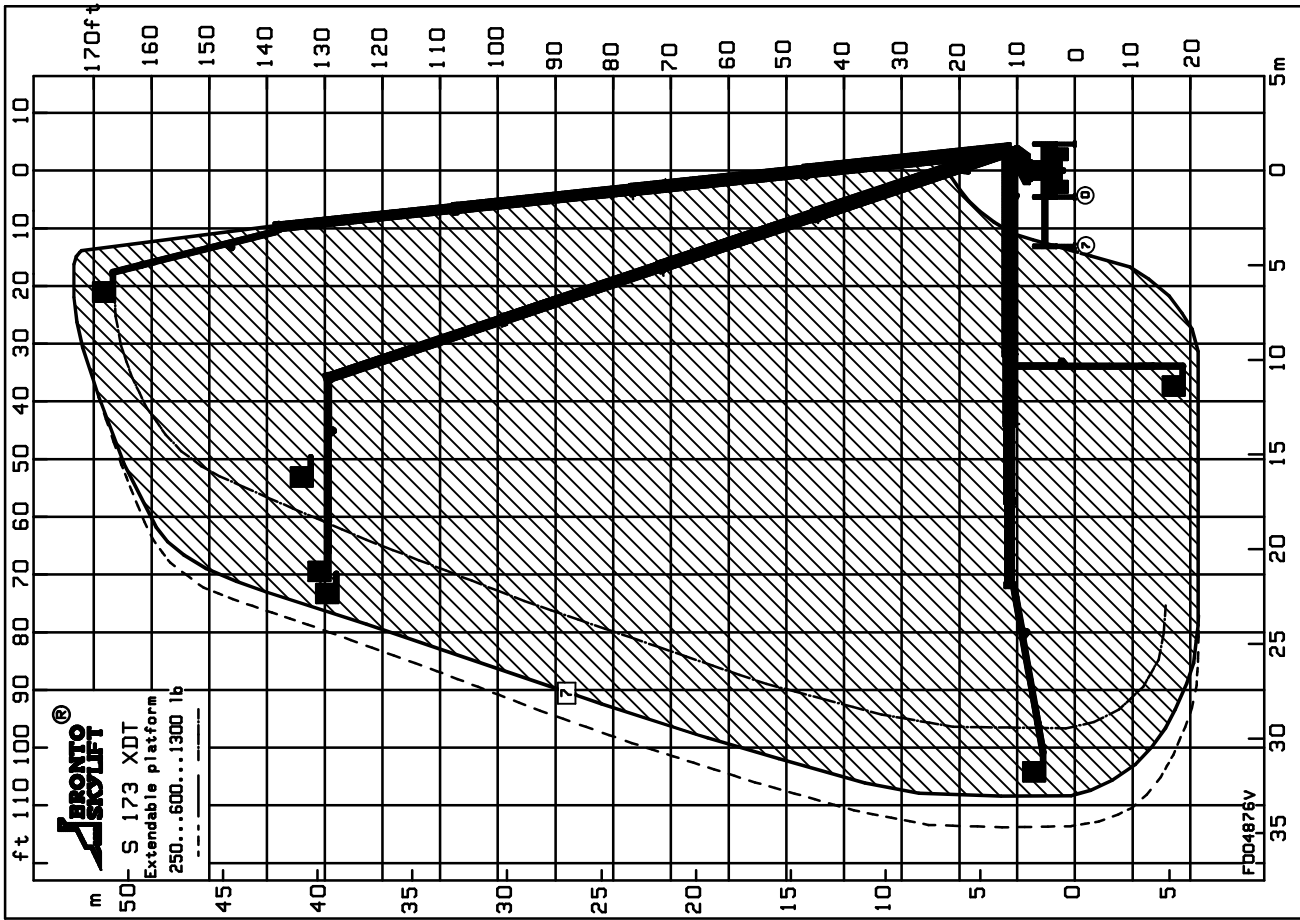


NOTE1: Levitetään tyköni  
 NOTE2: Gw/ 26 ton  
 REMARKS: PRELIMINARY



**TECHNICAL DATA**

Safe working load max. : 600 kg  
 Max. permitted wind speed : 12.5 m/s  
 Typical GVW : 26.0 ton  
 Operating weight min. : 25.0 ton  
 Outrigger width and length c/c  
 - normal jacking : 8.0/7.5 m  
 - narrow jacking : 2.8/7.5 m  
 - one side jacking : 5.4/7.5 m  
 Calculation code :

PRELIMINARY

All rights reserved  
 This specification is issued without  
 liability. This document, which is our exclusive intellectual  
 property, shall remain the property of Bronto Skylift Oy.  
 It is not to be reproduced, stored in a retrieval system or  
 communicated in any form without our  
 written consent.  
 BRONTO SKYLIFT OY AB  
 Tampere Finland

ULOTTUVUUSKAAVIO  
 RÄCKVIDSDIAGRAM  
 OUTREACH DIAGRAM  
 ARBEFSDIAGRAM  
 DIAGRAMA DE TRABAJO  
**PÄÄPÄÄR CEMA**

At your service Yhteistyö ja palvelu onnistuu! Hävittäjä ja modifikaatio Räskivälitys ja korjaus		1-2000 BRONTO SKYLIFT	
S 53 XDT		DRAWN KKE	
OUTREACH DIAGRAM		2011-02-21	
SAFE WORKING LOAD 600 KG		APPYD	
DRAWING NUMBER		REV	
<b>BRONTO SKYLIFT</b>		<b>F004876A</b>	
BRONTO SKYLIFT OY AB FINLAND		BRONTOCAD	

VAR.A: metri-mitoitus tasolla 25  
 VAR.V: jalka-mitoitus tasolla 26

HANDLING ON CAD SYSTEM ONLY