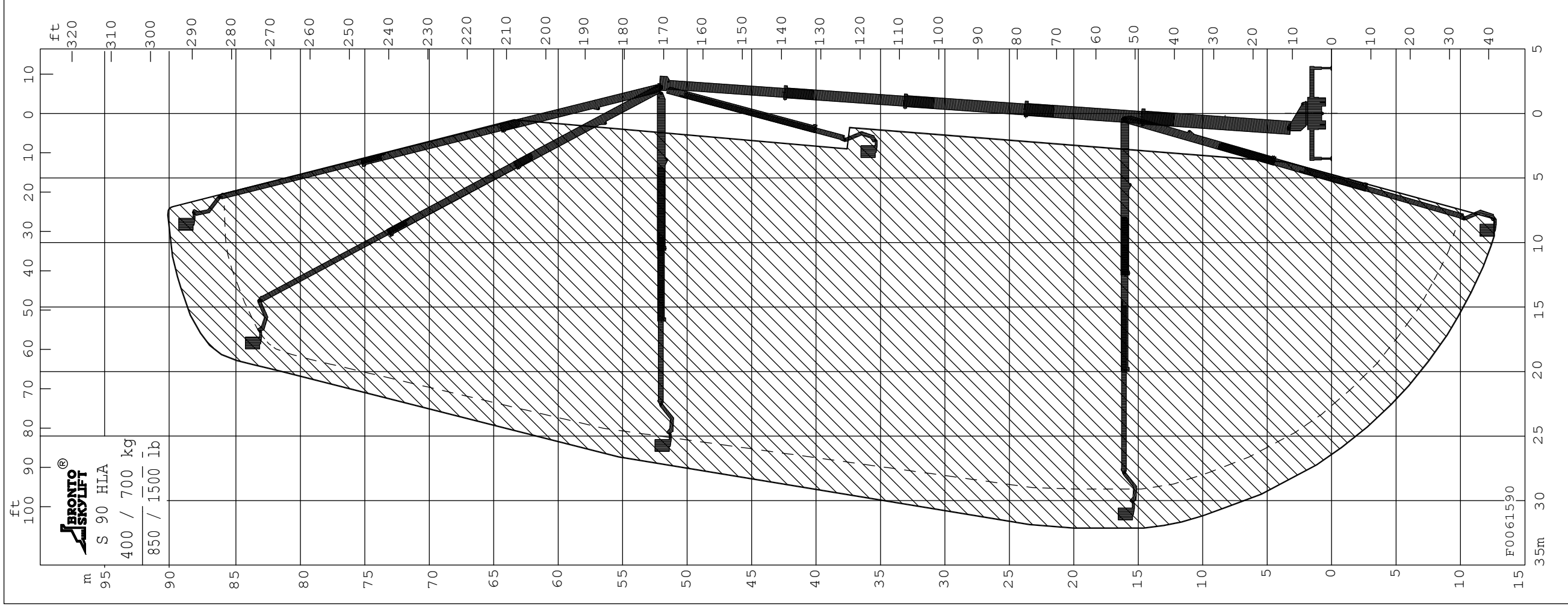


TECHNICAL DATA

Safe working load max. : 700 kg
 Max. permitted wind speed : 12.5 m/s
 Typical GVW : 48 ton
 min. operating weight : 47 ton
 Outrigger width and length c/c : 7.0/7.0 m
 - normal jacking
 Calculation code :

PRELIMINARY



All rights reserved		Anderungen vorbehalten		Sous réserve de modification		Reservasjon för ändringar	
BRONTO SKYLIFT S 90 HLA				BRONTO SKYLIFT S 90 HLA			
code: (A3)		code: (A3)		code: (A3)		code: (A3)	
OUTREACH DIAGRAM		OUTREACH DIAGRAM		OUTREACH DIAGRAM		OUTREACH DIAGRAM	
SAFE WORKING LOAD 700 kg		SAFE WORKING LOAD 700 kg		SAFE WORKING LOAD 700 kg		SAFE WORKING LOAD 700 kg	
LAYER		LAYER		LAYER		LAYER	
DMG NUMBER		DMG NUMBER		DMG NUMBER		DMG NUMBER	
REV		REV		REV		REV	
F0061590		F0061590		F0061590		F0061590	
BRONTOCAD		BRONTOCAD		BRONTOCAD		BRONTOCAD	

REMARKS PRELIMINARY

NOTE1 :

NOTE2 :